

This document provides instructions for installing updated system software on the VERUS Diagnostic Platform. Installing an update is a two-part process: First install the VERUS System Software Update, then install the Scanner firmware.

Before You Begin

Perform these preliminary actions before updating the VERUS system software:

- Power up the VERUS unit.
- Exit the VERUS Diagnostic Platform system software and all other open programs.
- Either download the update package directly onto the desktop of your VERUS unit, or copy the downloaded update package onto the desktop of your VERUS unit. Both methods place a VERUS Setup icon onto the desktop (Figure 1).
- Ensure the VERUS unit has a constant reliable power source.

IMPORTANT:

It is highly recommended that the VERUS unit be powered by the AC/DC Power Supply during the update to avoid accidental power loss, which can severely damage the unit.

Installing the VERUS System Software Update

Use the procedure below to install the VERUS software update:

**To update the VERUS system software:**

1. Double-tap the **VERUS Setup** icon on the desktop (Figure 1).



Figure 1 Sample VERUS Setup icon

The VERUS Pre-installer opens.

2. Select **Next** from the VERUS Pre-installer screen to begin the process (Figure 2).

The pre-installer automatically performs the following tasks:

- Backs up your saved data
- Removes the old version of the software
- Installs the new version of the software
- Restores your saved data

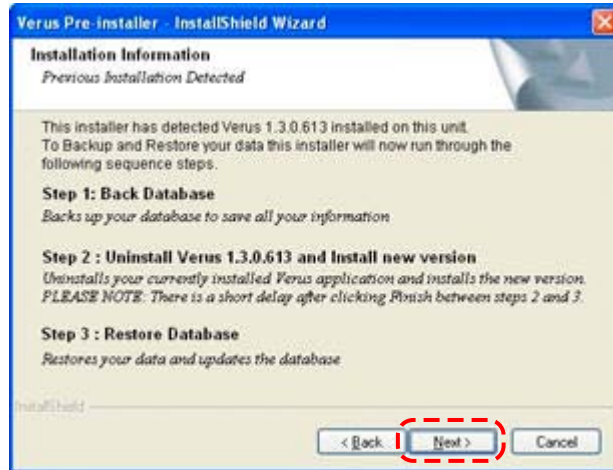


Figure 2 Sample VERUS Pre-installer screen

The automated procedures begin and a series of screens display to track your progress. This will take several minutes.



NOTE:

A dialog box with a message about SQL Express not properly installing may open. If so, select Yes to close the dialog box and continue with the installation.

The Installation Wizard welcome screen, which requires a confirmation to continue, displays when VERUS is ready to begin installing the updated software (Figure 3).



Figure 3 Sample welcome screen

3. Select **Next** from the welcome screen.
The Ready to Install screen displays (Figure 4).
4. Select **Install** to continue.

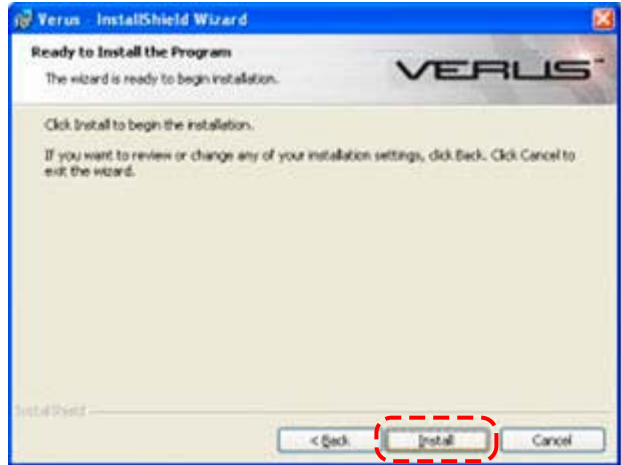


Figure 4 Sample Ready to Install screen

A series of screens with a progress bar displays to show the status of the installation.

5. Select **Finish** when the “Completed” screen displays (Figure 5).



Figure 5 Sample Completed screen

The System Reboot screen opens (Figure 6).

IMPORTANT:

Restarting the computer at this point is required to complete the software installation.

6. Make sure **Yes, I want to restart my computer now** is selected (Figure 6).
7. Select **Finish** to continue (Figure 6).



Figure 6 Sample System Reboot screen

The computer shuts down, then restarts and opens the VERUS Diagnostic Platform.

Installing the Scanner Firmware

When the VERUS Diagnostic Platform opens with the Vehicle ID module active, you are ready to install the Scanner firmware, which is phase two of the software update.



To install Scanner firmware:

1. From the Vehicle ID module either select an existing vehicle or create a new one.
2. Select the **Scanner** module from the menu bar.

The Hardware Firmware Download message displays (Figure 7).



Figure 7 Sample Hardware Firmware Download message

3. Select **OK** to continue.

The download begins and a progress bar displays to track the status (Figure 8).

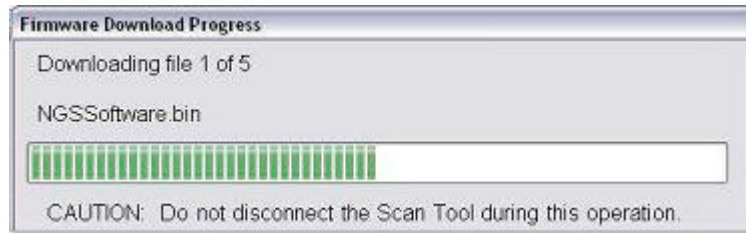


Figure 8 Sample download in progress screen

4. Select **OK** when "The firmware has successfully updated" message displays (Figure 9).

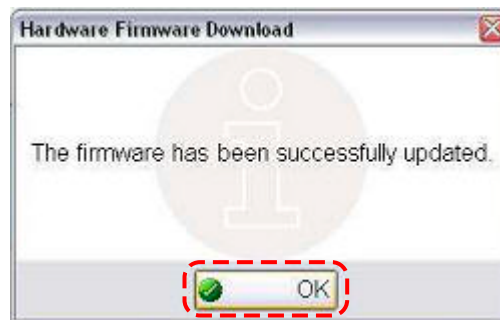


Figure 9 Sample successfully updated message

Your updated VERUS Diagnostic Platform is now ready to use.