



ShopStream Optimize Download and Installation Instructions

This document provides instructions to download and install the ShopStream Optimize application onto your VERUS unit. ShopStream Optimize performs several maintenance operations that clean up and organize the data on the hard-disk drive, which increases tool performance. ShopStream Optimize also gives you an easy selection of battery power options to best suit your use of the tool.

After ShopStream Optimize installs it automatically launches the next time you boot your VERUS unit. Shortcut icons are also install on the desktop and in the task bar at the lower right corner of the screen.

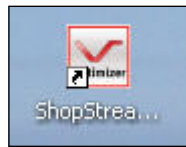


Figure 1 Sample desktop icon



Figure 2 Sample task bar icon

ShopStream Optimize allows you to select which of these maintenance tasks to perform, it is recommended to run each task:

- **Disk Cleanup**—erases items that are no longer needed from the disk, a procedure which takes several minutes.
- **Disk Defragmenter**—reorganizes files on the disk to maximize space usage, a procedure which may take a considerable amount of time depending upon the condition of the disk drive.
- **Check Disk**—evaluates the integrity of the disk, a procedure which may take up to 30 minutes.

Maintenance tasks are performed in the order listed above, and each task requires a confirmation from you in order to begin. After ShopStream Optimize is run for the first time it automatically launches once every 14 days at boot-up. You can adjust the number of days between runnings by selecting Settings, which is accessed by right-clicking (holding steady pressure) on the toolbar tray icon.



To download and install the software:

1. Launch your Internet browser and navigate to the download website.
2. Locate the ShopStream Optimize download.
3. Follow the on-screen instructions to download the file.



NOTE:

If you select Run from the security warning the installation begins automatically. If you select Save, you must navigate to the saved folder and select the setup.exe file to continue.

4. Select **Next** when the ShopStream Optimize Setup Wizard screen opens.
 5. Select **Next** to install the program to the default location.
 6. Select **Next** to confirm the installation.
 7. Select **Finish** when the Installation complete message displays.
-

IMPORTANT:

Your VERUS must be shut down and restarted before running the ShopStream Optimize application.



To run ShopStream Optimize:

1. Tap the ShopStream Optimize icon in the task bar to launch the program and open the reminder dialog box.

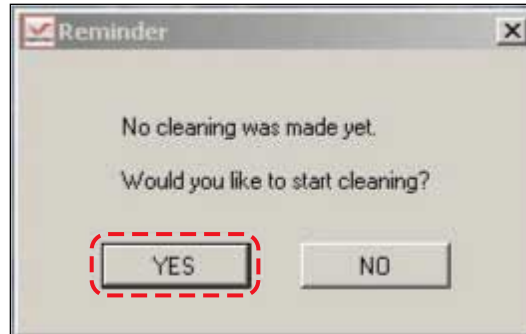


Figure 3 Sample reminder dialog box

2. Select an option:
 - **YES** begins the Disk Cleanup operation (recommended).
 - **NO** skips Disk Cleanup and advances to the next task (Disk Defragmenter).

When YES is selected a “calculating” message momentarily displays while the program evaluates the contents of the disk, then the Disk Cleanup dialog box displays.

Add or remove item from the delete list by selecting the check boxes. It is recommended to accept the default recommendations to prevent accidentally deleting important data.

3. Select **OK** to continue.

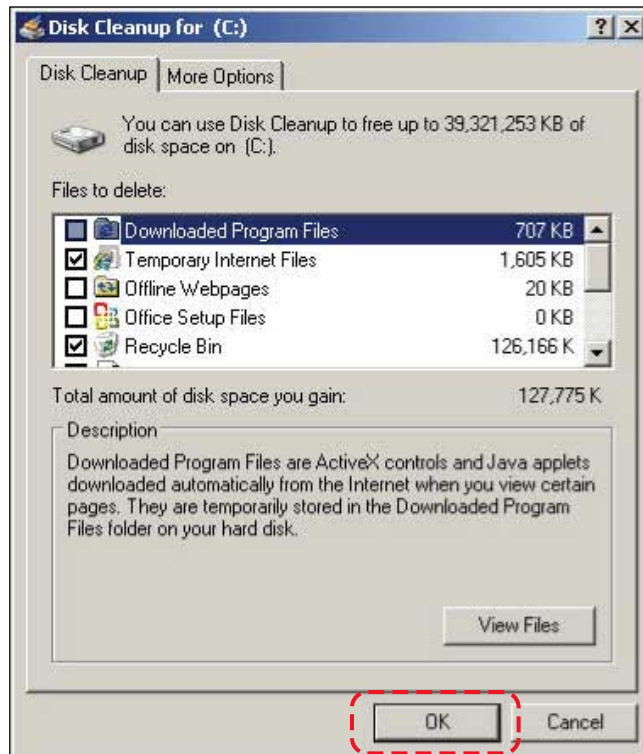


Figure 4 Sample Disk Cleanup dialog box

4. Select **Yes** when the confirmation message displays.

The Disk Defragmenter dialog box opens once Disk Cleanup completes, or if No is selected.

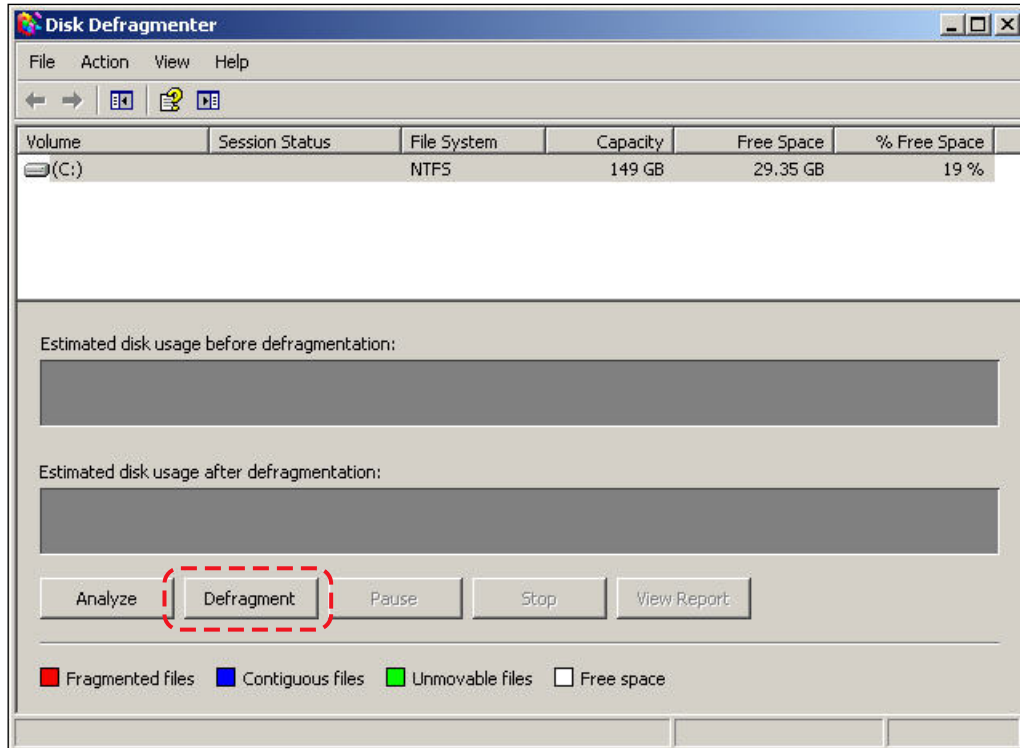


Figure 5 Sample Disk Defragmenter dialog box

5. Highlight **C:** as the volume to be defragmented in the upper field of the dialog box.
6. Select an option to begin the defragment process:
 - **Analyze**—evaluates and reports on the condition of the disk.
 - **Defragment**—begins the defragment process (recommended).



NOTE:

Select the “x” box in the upper-right corner to close the dialog box, skip Disk Defragmenter, and advance to Check Disk.

7. Close the Disk Defragmenter dialog box and the Check Disk Confirmation displays.

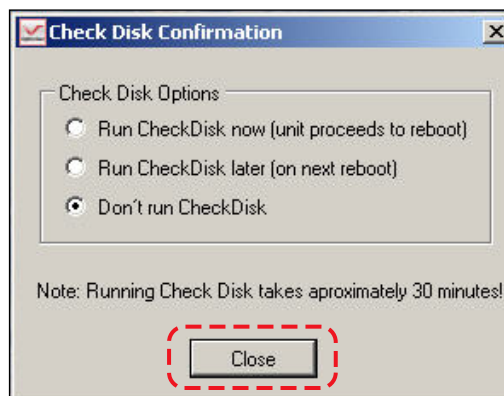


Figure 6 Sample Check Disk Confirmation dialog box

ShopStream Optimize Download and Installation Instructions

8. Select one of the available options:
 - Run Check Disk now (unit proceeds to reboot)—(recommended)
 - Run Check Disk later (on next reboot)
 - Don't run Check Disk
9. Select **Close** to initiate the indicated option.



NOTE:

After ShopStream Optimize is run for the first time a reminder to automatically launches once every 14 days at boot-up. You can adjust the number of days between runnings by selecting Settings.



To adjust Settings:

1. Hold steady pressure on the Windows tray ShopStream Optimize icon to open the menu.

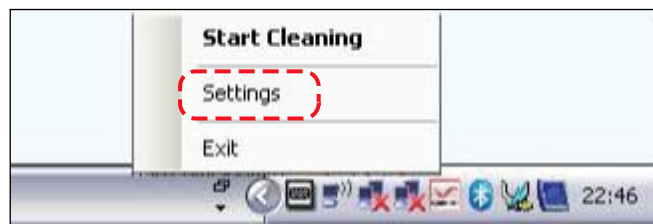


Figure 7 Sample tray icon and menu

2. Select **Settings** to open the dialog box.

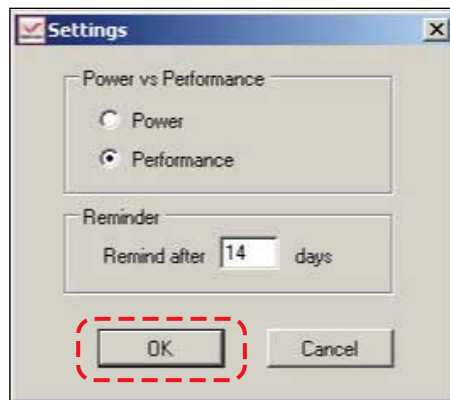


Figure 8 Sample Settings dialog box

3. Select either Power or Performance:
 - **Power** configures your VERUS for maximum battery life:
 - Screen saver is set to Verus
 - Power Scheme is set to Portable/Laptop
 - Hibernate is enabled
 - **Performance** configures your VERUS for best performance:
 - Screen saver is set to blank
 - Power Scheme is set to Always on
 - Hibernate is disabled
 4. Enter the number of day between intervals in the Reminder field.
 5. Select **OK** to accept the settings and close the dialog box.
-